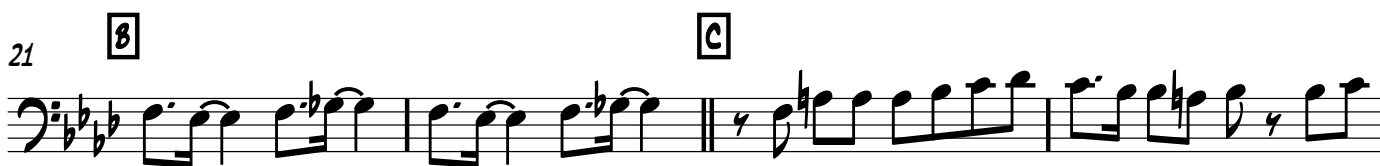


MERE HATHON MEIN

HARIPRASAD CHAURASIA

TROMBONE 1



2

TROMBONE

41



F

First staff of music, measures 41-44. Bass clef, key signature of three flats, 4/4 time. Includes a double bar line with repeat dots.

45

Second staff of music, measures 45-50. Bass clef, key signature of three flats, 4/4 time.

51

G

Third staff of music, measures 51-56. Bass clef, key signature of three flats, 4/4 time.

57

Fourth staff of music, measures 57-60. Bass clef, key signature of three flats, 4/4 time.

61

H

I

Fifth staff of music, measures 61-68. Bass clef, key signature of three flats, 4/4 time. Features two long horizontal lines representing sustained notes, each with a '4' above it.

69

4

WHISTLE

Sixth staff of music, measures 69-75. Bass clef, key signature of three flats, 4/4 time. Includes a '4' above a long horizontal line and a 'WHISTLE' section with diamond-shaped notes.

D.S. AL CODA

76



Seventh staff of music, measures 76-80. Bass clef, key signature of three flats, 4/4 time.